



RHE 27

Rack/Panel Mount Multifunction Mass Flow Transmitter

General process flow measurement / Batching and Mixing / Feed stocks and transfers / Custody transfer





Features

- Rack/Panel Mounting
- Operate with RHM sensor in hazardous area
- Selectable Units for Mass, Volume, Density and Temperature
- Positive, negative and net totalizers for both volume and mass flow
- Two configurable pulse/frequency/status outputs – double pulse available
- Two analog outputs
- Two configurable digital status outputs
- Configurable digital input
- Analog input configurable for pressure or density
- Advanced functions: Net Oil, Baume/Brix, % Solids, Standard Density and Standard Volume (API MPMS Ch. 11)
- Modbus RTU and HART
- Custody transfer lockout switch and seal point
- Backlit Color LCD display and 3 operator buttons with intuitive menu design
- USB connection for PC running Rheonik RHECom software
- Built-in Assurance View® Advanced Diagnostic Set – clear publication of measurement status with Assurance Factor® and/or color changing display
- Password Protected Setup
- Upload and download of configuration files
- Power consumption less than 5 W
- Optional lockable front cover

General Specification Overview

Enclosure Material	IEC61554 panel mount housing, PPE/PS-G20. Lockable front cover available; IP20 (front IP54 with optional lockable cover)
Ambient Temperature	-20°C to +60°C / -4°F to +140°F
Dimensions	96 x 144 x 61/75 mm (3.78 x 5.67 x 2.4/2.95 in)
Display	Backlit color LCD. Screen changes color to indicate warning or error
Weight	0.55 kg (1.2 lb)
Operation	3 x front panel operator buttons for all menu navigation and settings
Sensor Connection	Pluggable terminal strip. Cable available in lengths up to 100m for connection to remote sensor
Analog Outputs	Up to 2 x 4-20mA outputs, active / passive Uncertainty of the analog output +/- 0.1% of reading, +/- 10µA All analog outputs acc. to NAMUR NE43
Digital Outputs	Up to 2 x configurable status outputs (IEC60946)
Pulse/Freq/Status Outputs	Up to 2 x configurable pulse / frequency / status (IEC 60946), max 10 kHz
Digital Inputs	Up to 2 x configurable control inputs (IEC60946)
Digital Data Communications	Modbus RTU (RS485); Connection to a PC (USB) with Rheonik RHECom software HART over analog output (optional)
Power Supply	100-240 VAC (48 to 62 Hz), 5W and/or 12-24 VDC +/- 10%, 4W
Hazardous Area Approvals	ATEX / IECEx, cCSAus for RHE27 in ordinary area, RHM in all zones - please see Part Number Code page. Others available on request

Hazardous Area Installation Overview



Sensor and transmitter must have matching approvals

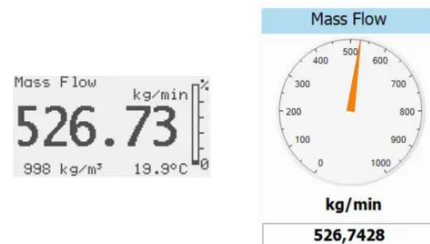
Software Function Packages and Features

Standard Operation Package (Part Number Code S0)

The RHE27 Standard Operation Package provides the following measurement and function features:

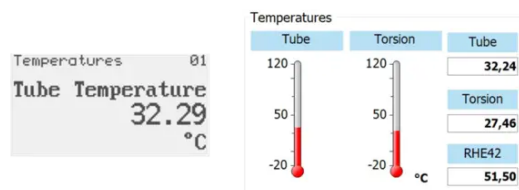
Direct Mass Flow Measurement

Mass flow is calculated using the Coriolis principle to provide a high accuracy Mass Flow measurement of the fluid flowing through an Omega Tube Coriolis Meter.



Temperature Measurement

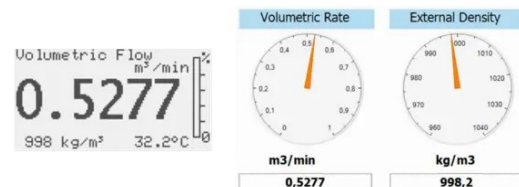
Each Omega Tube Coriolis Sensor provides a temperature measurement from built in sensors.



Fixed and Calculated Density Function

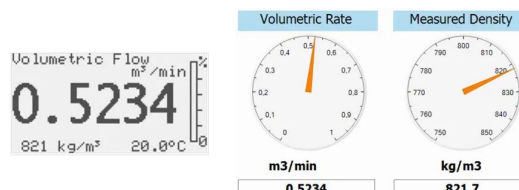
The Fixed Density function allows to enter a fixed density value for volumetric flow calculations.

The Calculated Density function allows density to be generated based upon process temperature. A base/reference density at a known temperature is entered for the fluid being measured along with a coefficient describing the change in density per temperature unit. The firmware in the transmitter calculates flowing density based upon this information to use for volumetric flow calculations.



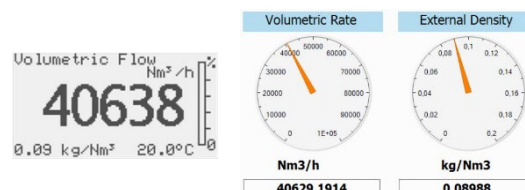
Calculated Actual Volume Measurement for Liquids and Gas

Volume measurement is calculated by dividing direct mass flow measurement by the Fixed Density.



Standardized/Normalized Volume Measurement for Gas

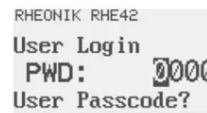
This function calculates the volume of gas passing through the meter at standard conditions. The density of the gas at standard conditions is entered into the transmitter and the volume is calculated using this in conjunction with the flowing mass.



Standard Package (Part Number Code SO) continue

Password Protection

All setup and calibration parameters within the meter are protected with passwords to prevent unintentional or unauthorized change once installed.



Batch Controller

The transmitter is equipped with an onboard batch controller that, in conjunction with external pumps and/or valves allows the precise delivery of a preset mass or volume of process fluid on demand. Operated from the instrument front panel, remotely via operator switches or through digital communication from a connected supervisory control system, the controller is configured to utilize either a one stage or a two stage delivery strategy in ensuring the right amount of fluid is batched through the meter. The electronics self-learns, adjusting shut off times as more and more batches are delivered to further refine the amount of delivery, saving material costs and improving quality.



Assurance View® Diagnostics

Inbuilt self-monitoring functions are available that can be used to determine the reliability of the flow meter readings at all times. Diagnostics are quickly accessed through dedicated menu displays, RHECom software and the MODBUS interface.



Density Operation Package (Part Number Code DO)

The RHE27 Density Operation Package includes all features from the Standard Operation Package plus the following measurement and function features:

Direct Density and Volume Measurement

The flowing density of the fluid in an Omega Tube Coriolis Sensor is determined from the measured resonant frequency of the sensor and used to calculate instantaneous volumetric flowrate.



Density Package (Part Number Code DO) continue

Brix/Baume Units

The unit can be configured to read out in °Brix or Baume. °Brix or Baume are used extensively in the sugar and beverage industries.

$$\frac{^{\circ}\text{Brix}}{^{\circ}\text{Bé}}$$

Assurance Factor Package with Assurance Diagnostics Suite (Part Number Code AF)

The RHE27 Assurance Factor Package includes all features from the Density Operation Package plus the following advanced diagnostic functions:

Assurance Factor®

Assurance Factor® is a numeric value generated by an internal algorithm that indicates the overall health of the flow meter and measurement. Assurance Factor® value can be used to trigger changes in screen color when the optional display is fitted to the RHE27 (White – Amber – Blue – Red), providing highly visible wide area condition indication.



WHITE

Normal Operation

No faults present. All parameters within expected limits. Meter fully operational



AMBER

Operation Not Optimal

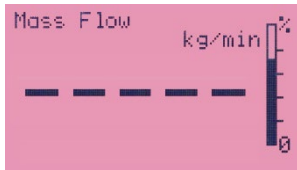
Sensor subject to noise / changing conditions in pipe. Measurement quality may be compromised



BLUE

Operation at Limit

Sensor experiencing disturbance. Measurement quality compromised



RED

Measurement Failure

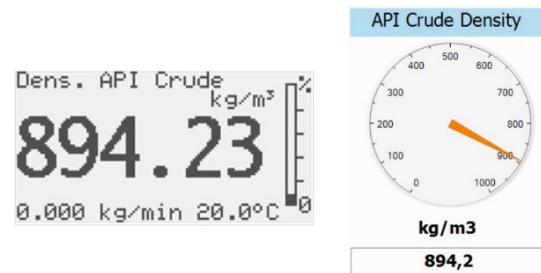
Sensor experiencing extreme disturbance / meter in fault. Measurement offline

Oil and Gas Function Package (Part Number Code GV)

The Oil and Gas Function Package includes all features from the Assurance Factor Package plus the following advanced measurement applications:

API Standard Density/Volume

When configured for this application, the transmitter will calculate density at standard conditions to API MPMS Chapter 11. All three product groups – crude oil, refined products and lubricants – can be metered using this built-in application. Precise calculation requires temperature and pressure inputs. Both inputs can be supplied through manual user menu entries or through Modbus updates to the transmitter or the internal tube temperature of the sensor. Volume flow and totalization at standard conditions are generated using the calculated standard density value.



Net Oil Calculation

Crude Oil is often mixture of oil and water and it is desirable to know the actual oil content. With this function, it is possible to calculate the net oil amount in a flowing stream using a live density measurement. The standard density (at standard temperature and pressure) of both the crude oil and the water/other portions of the stream must be provided as inputs for the calculation. These can be entered manually through the transmitter’s user menu or digitally via Modbus.

NET OIL



Percent Concentration Calculation

Percent concentration of a fluid in a mixture of two fluids (i.e. alcohol in water) or solids in liquid can be determined using the percent concentration function. With this function, the density of both components in the stream must be provided as inputs for the calculation. These values are entered manually through the transmitter’s user menu or digitally via Modbus and should be updated as temperature conditions change to obtain the best performance.

Data View/Monitoring			
Address	Name	Value	Unit
0x480C	VolPercentMainSubstance	53,96152	%

Custody Transfer Package (Part Number Code CT)

The Fluid Transfer or Custody Transfer Package includes everything from the Oil and Gas Function Package plus the following features:

Precision Flow Analysis (PFA)

For fast fill applications down to 0.5s duration measurements, transmitter update time can be increased to 4ms. This allows a 250Hz totalizer update rate (50Hz is standard) to maintain very fast tracking of actual volume/mass delivered, and e.g. through the internal batch control function, results in a maximum signal delay of 10-20ms to a connected control valve once the batch set-point is reached. Depending upon the speed of operation of the fill valve, repeatable accuracies of better 1% are achievable for filling operations of 500ms duration and less.



Hardware Lock Switch

For applications such as custody transfer where sealing is required. This switch, when engaged, prevents change of any setting within the transmitter through both the user panel interface and through a digital communications port. To accommodate some special customer needs the Lock Switch configured to leave a totalizer reset and/or a zero calibration possible.

Once the Lock Switch is set, a tamperproof seal can be applied to the transmitter case to indicate if the transmitter has not been opened since sealing.

```
Quick Setup      002
Zero Now
No entry!
* Custody Lock *
```

Power Supply Options

The RHE27 can be configured with one of three power supply options:

- Universal AC Power - 100-240 VAC $\pm 10\%$ (48 to 62 Hz) (Part Number Code A1)
- Wide Tolerance DC Power - 12-24 VDC $\pm 10\%$, 4W (Part Number Code D1)
- Dual Supply - 100-240 VAC $\pm 10\%$ (48 to 62 Hz) / 12-24 VDC $\pm 10\%$, 4W (Part Number Code U1)

This unique option provides inputs for simultaneous connection of both a universal AC and separate DC supply. The transmitter utilizes AC power when available but will switch to the DC supply in the event of AC power outage. The DC supply can be a battery source. As an example, an RHE27 transmitter and connected sensor will operate for 10 days or more on a typical automobile battery.

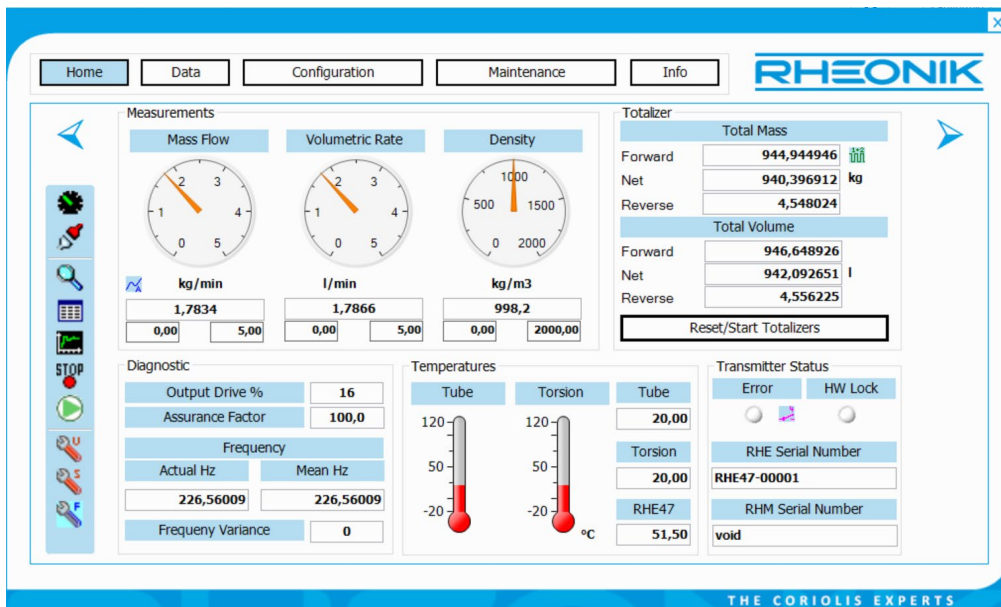
Program Package Function Summary

Feature	Program Package Code				
	SO	DO	AF	GV	CT
Live Mass Flow Measurement	X	X	X	X	X
Live Temperature Measurement	X	X	X	X	X
Inferred Density by Reference Density and Temp.	X	X	X	X	X
Fixed or Norm Density Value (e.g. kg/Nm ³)	X	X	X	X	X
Volumetric Flow from Inferred/ Fixed/Norm Density	X	X	X	X	X
Standardized Gas Volume Calculation	X	X	X	X	X
Resettable Mass / Volume Totalizers	X	X	X	X	X
Non-Resettable Mass / Volume Totalizers	X	X	X	X	X
Single and Two Stage Batch Control	X	X	X	X	X
Self Learning Batch Control	X	X	X	X	X
Assurance View® Diagnostics	X	X	X	X	X
Setup/Configuration Password Protection	X	X	X	X	X
Live Density Measurement		X	X	X	X
Volume using Mass and Measured Density		X	X	X	X
Brix / Baume Units		X	X	X	X
Assurance Factor® Calculation and Diagnostics			X	X	X
PID Controller for Analog Output (e.g. Pump, Valve)			X	X	X
Partly Filled Pipe Management			X	X	X
API Standard Density/Volume				X	X
Net Oil Calculation				X	X
Concentration/Percent Substance Calculation				X	X
Hardware Lock Switch					X

RHECom Software

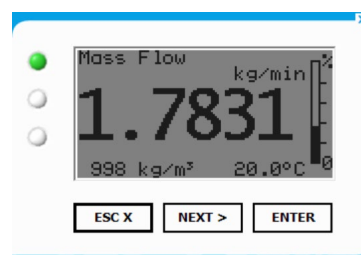
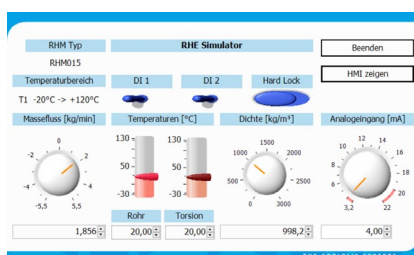
The RHE27 transmitter is a fully featured device with many sophisticated functions and configuration is necessary for proper performance of these functions. RHECom software is available in three versions – Free, Pro and Pro+.

RHEComFree is available for download at no extra cost or on USB flash drive. RHEComFree allows full setup of transmitter parameters and includes a useful datalogging function for monitoring performance of the meter.



For a small one-time license fee, RHEComPro and RHEComPro+ offer additional insight and setup convenience menus. RHEComPro includes data logging, trending and broad diagnostic capabilities.

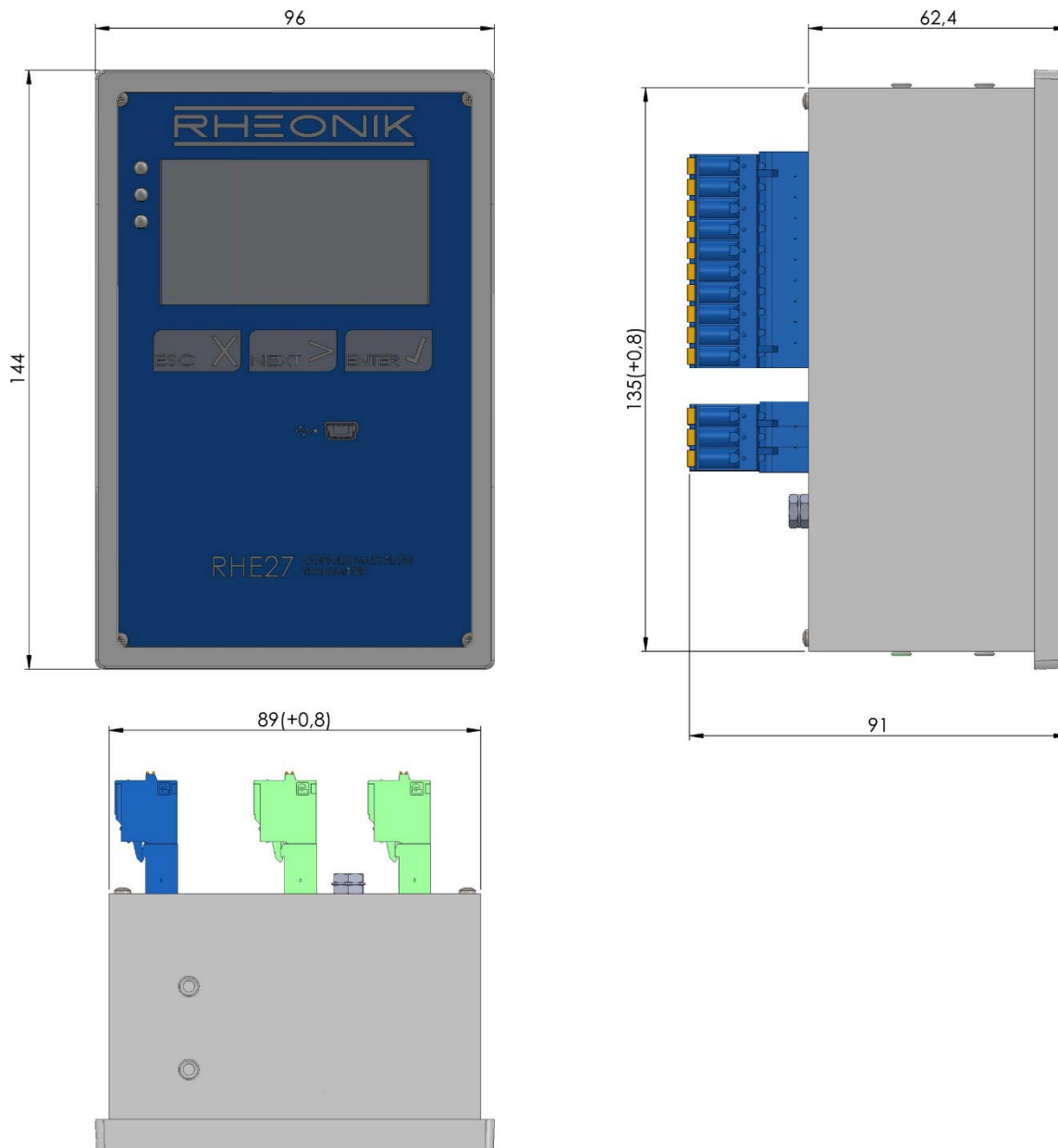
RHEComPro+ takes flow meter management one step further with a revolutionary fully functioning simulator application. With the simulator, you can trial run your application from the convenience of your office, adjusting transmitter settings, setting alarms and filters, and creating transmitter configuration files for upload into the actual unit. The simulator is also ideal for training - it exactly mimics the front panel of the instrument display and buttons when clicked and includes controls for adjusting flow, density and temperature readings just like the unit was in line!



RHECom software is designed to ensure simple and expedient setup of Rheonik transmitter features and functions – a real time saver and a valuable tool.

Mechanical Construction

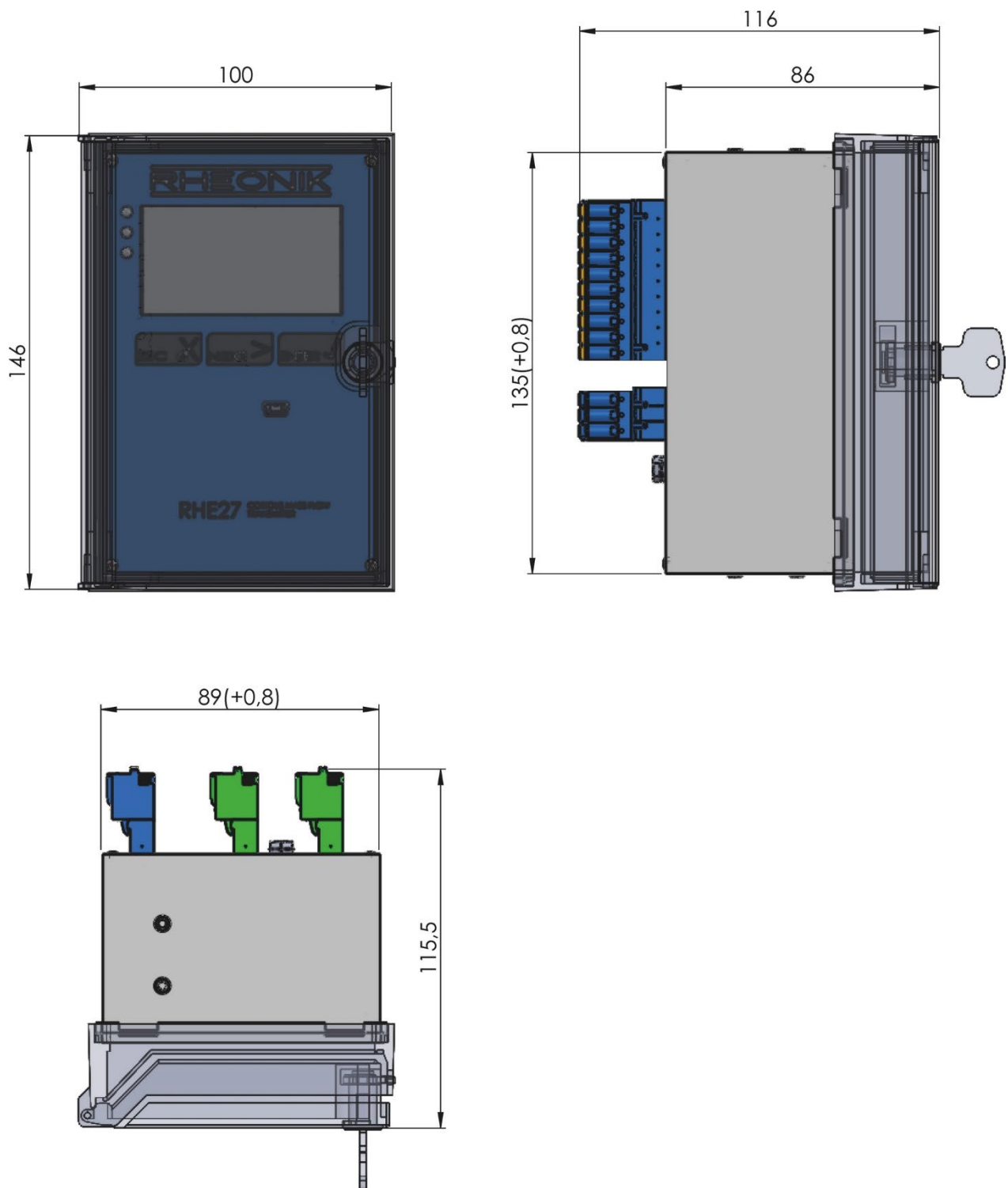
RHE27 Dimensions Type E1



All dimensions in mm

Mechanical Construction

RHE27 Dimensions Type E2



All dimensions in mm

Electrical connection to transmitter compatibility

Electrical connection option selections are compatible with the transmitter range according to the following table. Note that economical blind front versions of some transmitters are available where displays and keypads are not required. The wide range of Rheonik sensors and transmitters provide tremendous options for system designers and end users alike.

Sensor Connection Options								
Order Code		JM	SM	S9	TM	J2 ¹	J5	J9
	RHE 21	✓	✓	–	✓	–	–	–
	RHE 26	✓	✓	–	✓	–	–	–
	RHE 27	✓	✓	–	✓	–	–	–
	RHE 28	✓	✓	–	✓	–	–	–
	RHE 42	✓	✓	–	✓	✓	–	–
	RHE 45	–	–	–	–	–	✓	–
	RHE 46	✓	✓	–	✓	–	–	–
	RHE 49	–	–	✓	–	–	–	✓

¹ Only with RHM design types PF, PT. Refer to section “order codes” in the corresponding RHM datasheet.

RHE 27 Part Number Code

E27-	1	2	3	4	5	6	7	8
Example part number code								
E27-	E1	D1	AF	S1	AS	NN	NN	NNN
1	Housing type							
E1	Standard panel mount (IP20) with color display							
E2	Panel mount with lockable cover (IP20 / IP54 front) with color display							
2	Power supply voltage							
D1	12 to 24 VDC (+/- 10%)							
A1	100 to 240 VAC (48 to 62 Hz)							
U1	12 to 24 VDC (+/- 10%) and/or 100 to 240 VAC (48 to 62 Hz)							
3	Software function package							
SO	Standard operation system - mass flow, normalized density / volume, Assurance View® Diagnostics							
DO	Enhanced operation system - mass flow, measured density / volume							
AF	DO configuration, additional Assurance Factor®, ZP History, Data Recording, PID Controller, PFFM							
GV	AF configuration, additional API Standard Density/Volume, Net Oil Calc., Concentration							
CT	GV configuration, additional hardware lock switch function							
4	I/O and interface configuration							
S1	1*4..20 mA (a/p) acc. NAMUR NE43, 2*DO , 1*DI, RS485 (Modbus)							
S2	2*4..20 mA (a/p) acc. NAMUR NE43, 2*DO , 2*DI, RS485 (Modbus)							
SH	S2 configuration, additional HART							
CH	S2 configuration, additional HART and analog input							
5	Hazardous area approval transmitter							
NN	Without approval							
AS	ATEX/IECEX [Ex ia Ga] IIC, Associated Equipment							
CS	cCSAus Class I, Associated Equipment							
6	Performance / compliance certification							
NN	Without							
7	Cable entry / glands							
NN	None, terminals outside of housing							

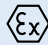
RHE 27 Part Number Code

8	Options
NNN	None / all standard
NNH	Hardware Lock Switch
NSI	Pre-setting instructions, customized I/O configuration

RHE 27 Accessories

NN	Without
C4	Standard sensor cable, halogen free, -50 °C to +105 °C, 9 wires, price per meter (m)
C6	Steel armoured sensor cable, halogen free, -50 to +105°C, 9 wires, price per meter (m)
P3	3 m pre-assembled C4 cable (cable ends ready for connection terminals)
P0	10 m pre-assembled C4 cable (cable ends ready for connection terminals)
IT	Interconnection box for standard cable prolongation, 2* M25 x 1.5 with glands
IM	Interconnection box for RHM sensors with M16 x 1.5 / M25 x 1.5 glands
RS	5 m PC cable (Mini USB B to USB A) - to connect PC / RHECom PC software
HM	Quality HART Modem (to connect via USB to PC)
PW	DIN Rail Power Supply Module 85..250 VAC to 24 VDC / 15 W (Non Ex)
MO	RS485 (Modbus) terminals to USB A Converter
PR	PC Software RHEComPRO license key (upgrades for two years are included)
PP	PC Software RHEComPRO+ license key (upgrades for two years are included)
TN	Terminal Adapter Set for I/Os and Power (spare part for RHE without Ex approval)
TA	Terminal Adapter Set for I/Os and Power (spare part for RHE with Ex approval)

Hazardous Area Certifications

Code	Zone / Division	Approval	Labeling
NN	Safe Area	-	No hazardous area certification
AS	safe area	ATEX IECEX	 II (1)G [Ex ia Ga] IIC [Ex ia Ga] IIC
CS	safe area	USA Kanada	[Ex ia] [Ex ia Ga] IIC



About Rheonik

Rheonik has but one single purpose: to design and manufacture the very best Coriolis meters available.

Our research and engineering resources are dedicated to finding new and better ways to provide cost effective accurate mass flow solutions that provide value to our customers. Our manufacturing group care for each and every meter we produce from raw materials all the way to shipping, and our service and support group are available to help you specify, integrate, start-up and maintain every Rheonik meter you have in service. Whether you own just one meter or have hundreds, you will never be just another customer to us. You are our valued business partner.

Need a specific configuration for your plant? Don't compromise with a "standard" product from elsewhere that will add extra cost to your installation. If we can't configure it from our extensive and versatile product range, our exclusive **AnyPipeFit Commitment** can have your flow sensor customized with any size/type of process connection and face to face dimension you need.

No matter what control system you use as the backbone in your enterprise, with our **AnyInterface Commitment**, you can be sure that connection and communication will not be a problem. Alongside a wide variety of discrete analog and digital signal connections, we can also provide just about any network/bus interface available (for example: HART, ProfibusDP, ProfiNet, EtherCAT, PowerLink, EtherNet/IP, CAN, ...) with our RHE 40 Series family of transmitters. Rheonik RHE 40 Series transmitters can connect to your system – no headache and no conversion needed.

Rheonik Messtechnik GmbH
Rudolf-Diesel-Straße 5
D-85235 Odelzhausen
Germany

Tel + 49 (0)8134 9341-0
info@rheonik.com

